



Office of the Controller

Reports

LISTEN  TEXT ONLY  PRINT  A A A

Community Indicators

Welcome to the San Francisco Community Indicators report. This is an attempt to create a picture of the well-being of San Francisco and the people who live, work, go to school in, or visit this city. We have compiled information from a variety of sources, and we are still looking for more and better indicators of life in San Francisco.

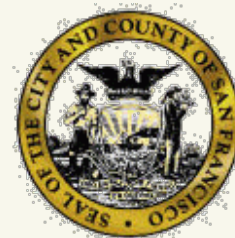
Please click on one of the following links for more information:

[Economy](#) [Public Safety](#) [Housing](#) [Transportation](#) [Social Environment](#)
[Education](#) [Government](#) [Health](#) [Culture/Recreation](#) [Physical Environment](#)

Please give us your feedback on this report. Our email address is performance@sfgov.org.

May 2004

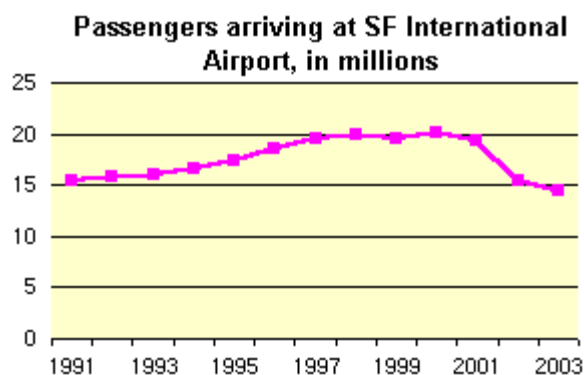
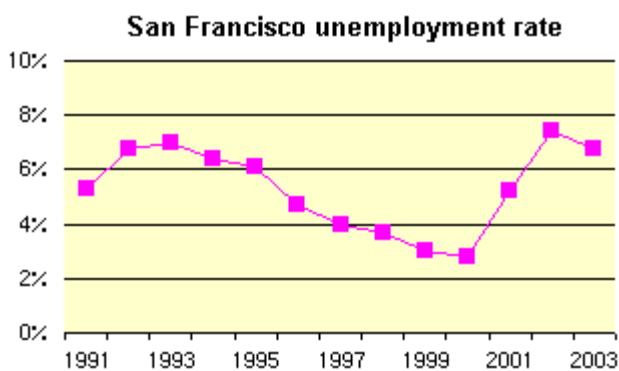
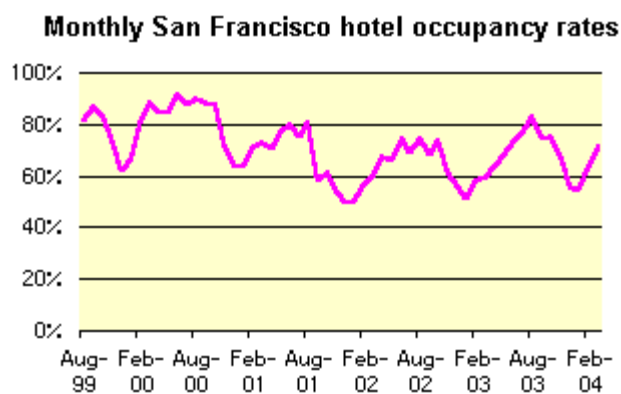
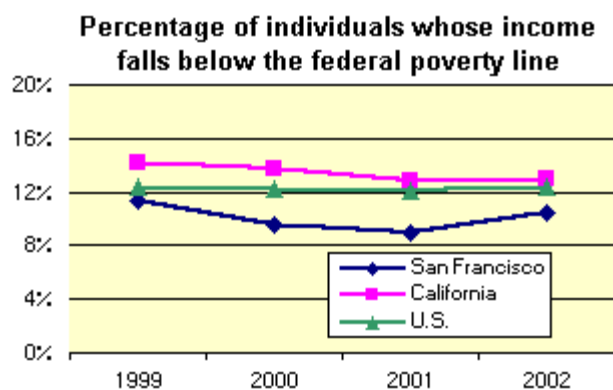
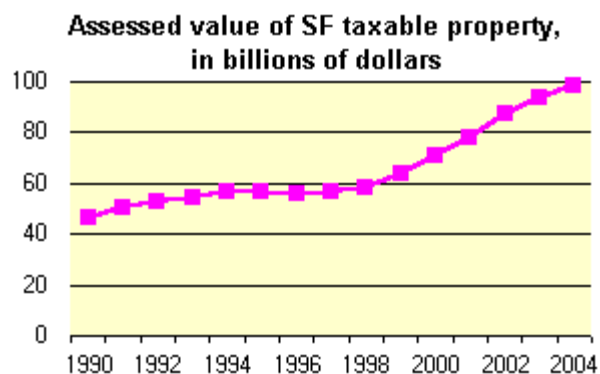
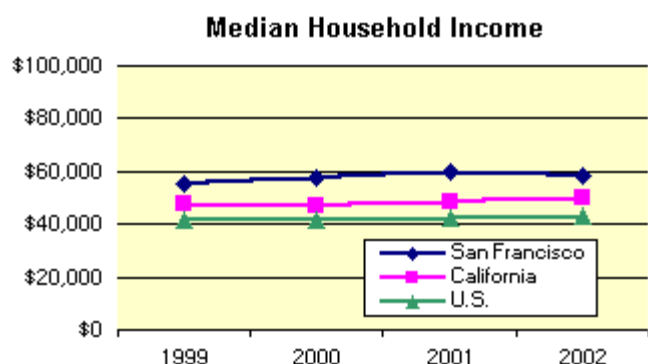
[Back to Controller's Office Home Page](#)

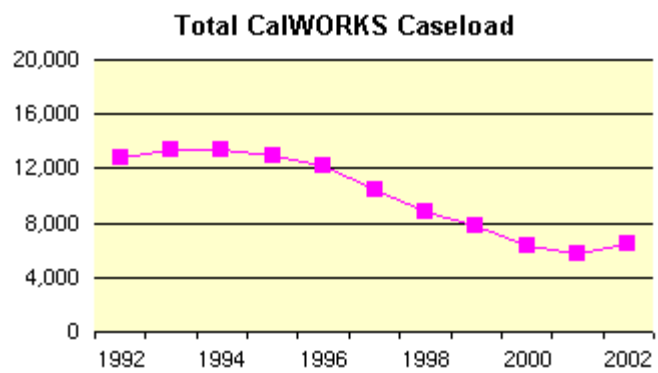


Economy

San Francisco has a relatively high median household income and low poverty rate, compared to the state and the nation. While unemployment has increased and key economic activities reflected in travel and hotel occupancy have declined, there is continuing strength in property values.

Click on the charts for more information.



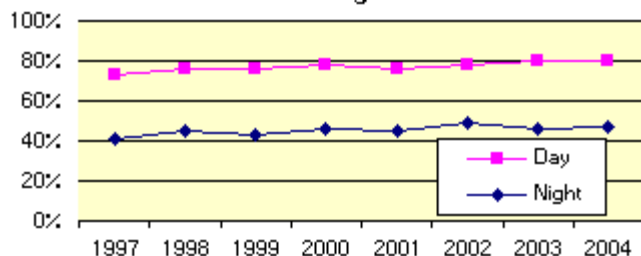


Public Safety

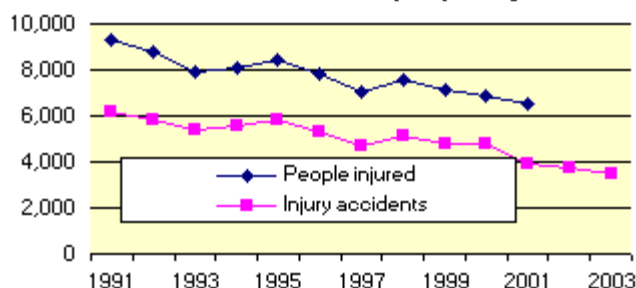
Crime and accident rates have declined over time, with relatively static perceptions of safety by San Francisco residents. Emergency response times average less than four minutes for medical emergencies, and about six minutes for police calls. Crime clearance (solving) rates range around 30 - 35% for violent and 11% for property crimes.

Click on charts for more information

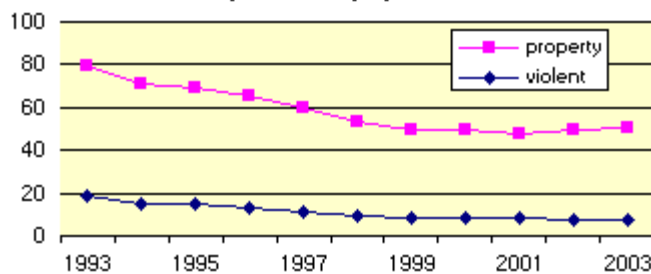
Percentage who feel safe walking alone in their neighborhoods



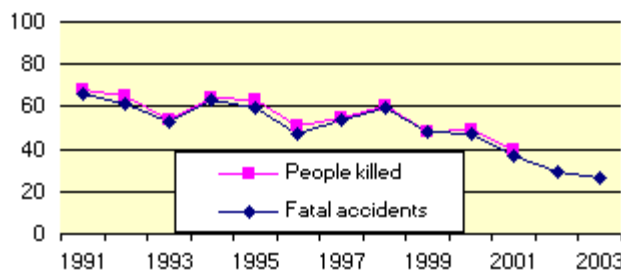
Traffic accidents that result in injury, and the number of people injured



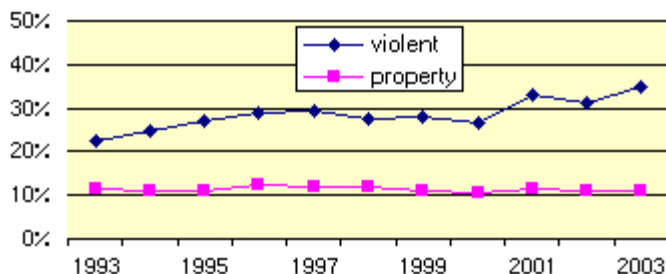
Reported crimes in San Francisco per 1,000 population



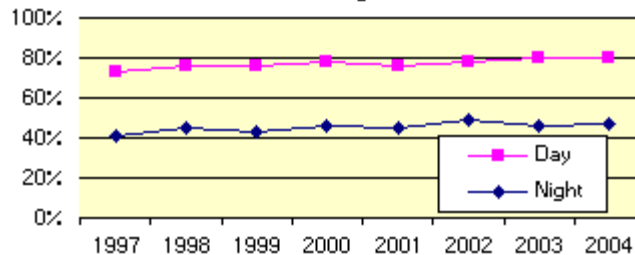
Number of traffic accidents that result in fatalities



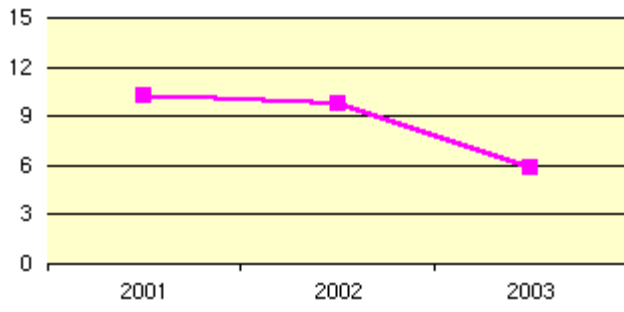
Crime clearance rates in San Francisco



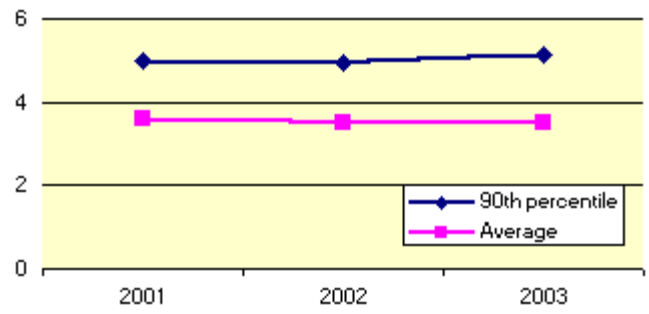
Percentage who feel safe walking alone in their neighborhoods



Average San Francisco police response time, in minutes



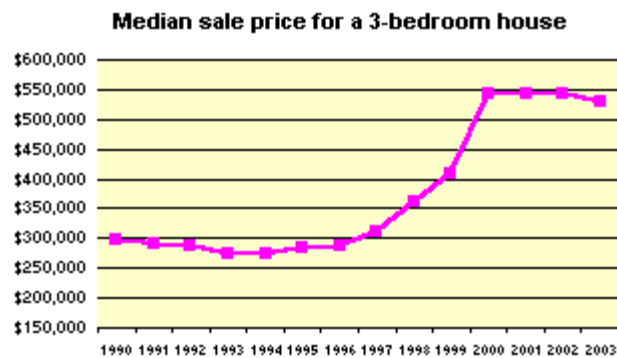
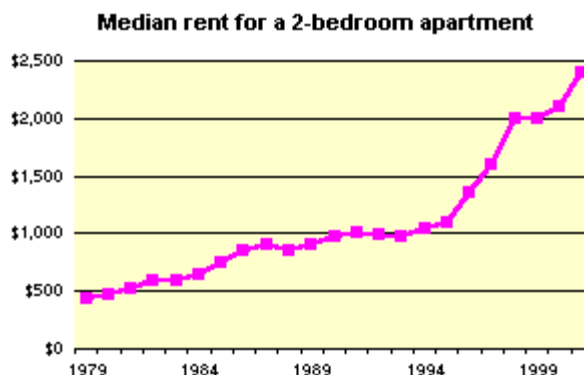
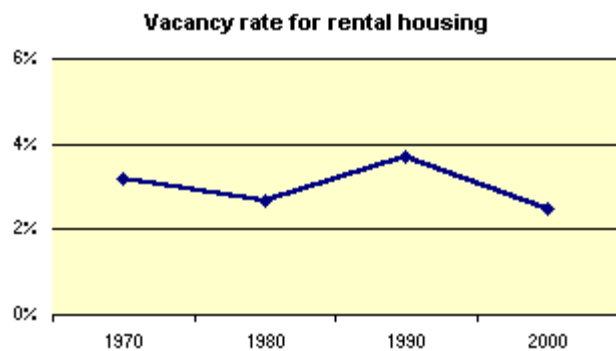
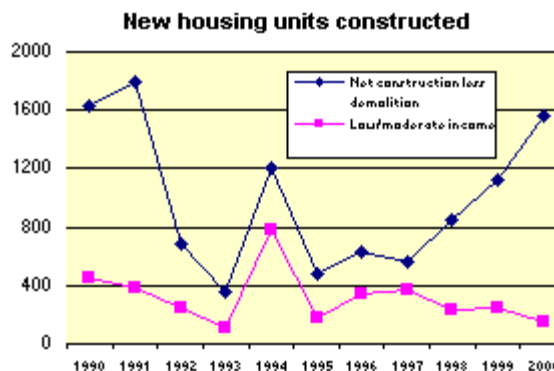
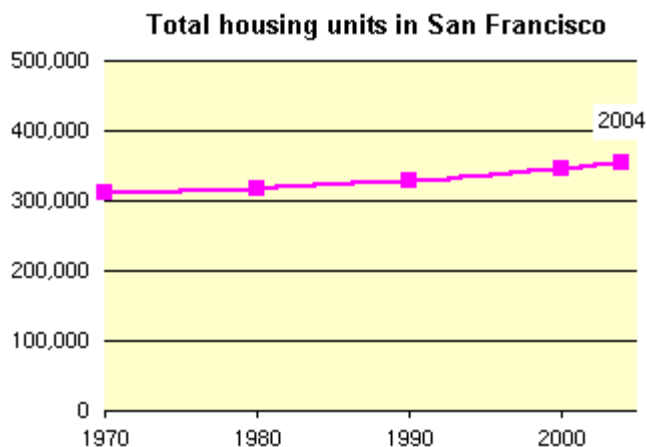
First unit EMS response time, in minutes



Housing

There has been relatively slow growth over the last few decades in housing units. An increase in construction in the late 1990s included mostly market-rate units, while the market flattened since 2000 at a median price of \$550,000 for a three-bedroom house. Median rents have risen much faster than inflation, and rental vacancy rates are low.

Click on the charts for more information.

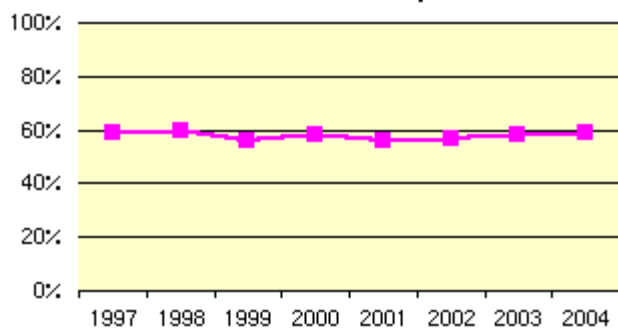


Transportation

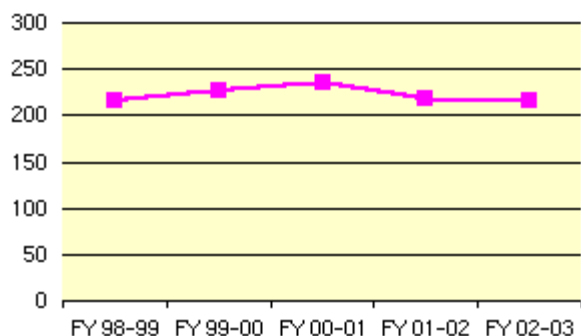
San Franciscans are heavy users of public transportation, which has improved since 1999. Muni's on-time performance has increased and residents' opinions have become more favorable. However, the condition of City streets receives relatively few positive ratings.

Click on the charts for more information.

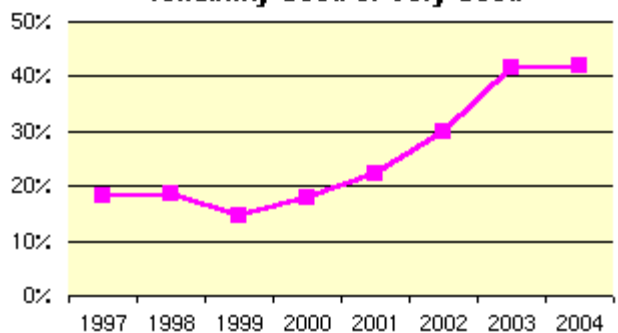
Percentage who ride Muni at least once per week



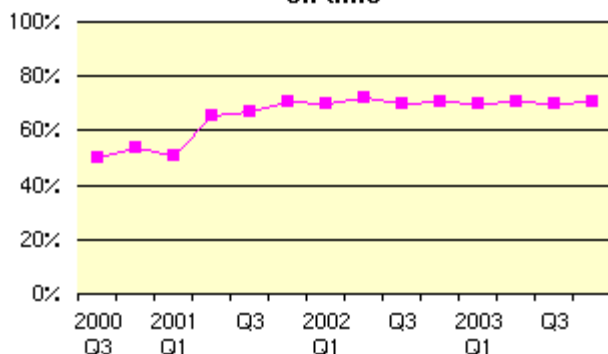
Total annual boardings of Muni vehicles, in millions



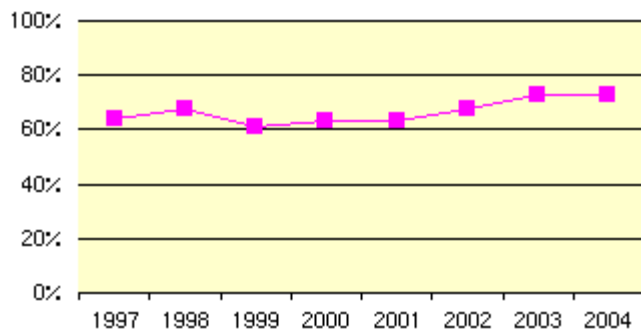
Percentage who rate Muni's timeliness and reliability Good or Very Good



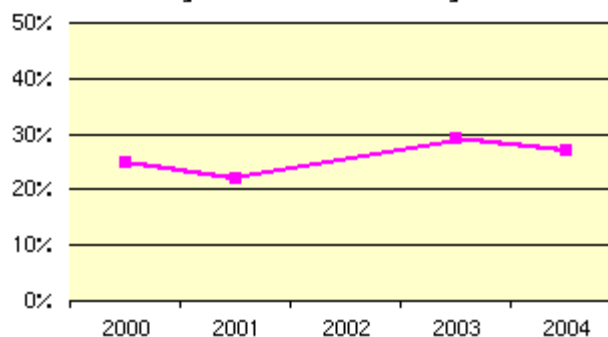
Percentage of Muni vehicles that run on time



Percentage who rate Muni's routes Good or Very Good



Percentage who rate the pavement of city streets Good or Very Good

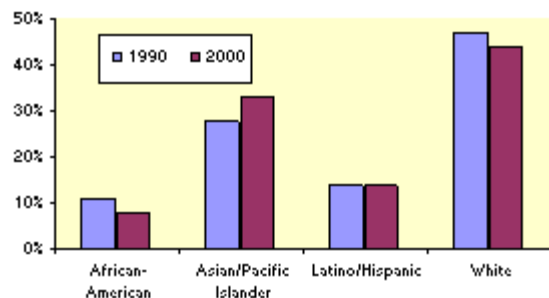


Social Environment

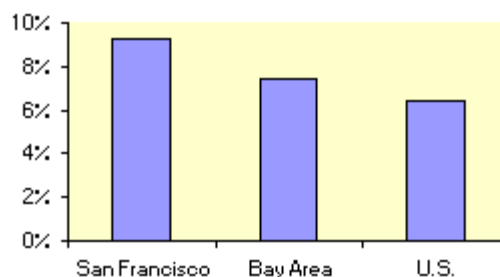
San Francisco's social environment reflects a high level of ethnic diversity, and a high level of charitable donations.

Click on the charts for more information.

Ethnic makeup of SF population



Discretionary income donated to charity

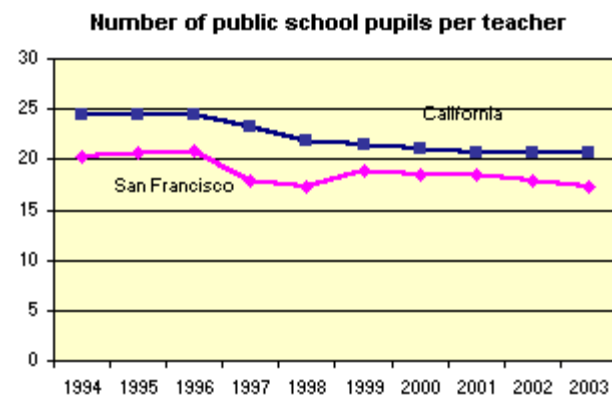
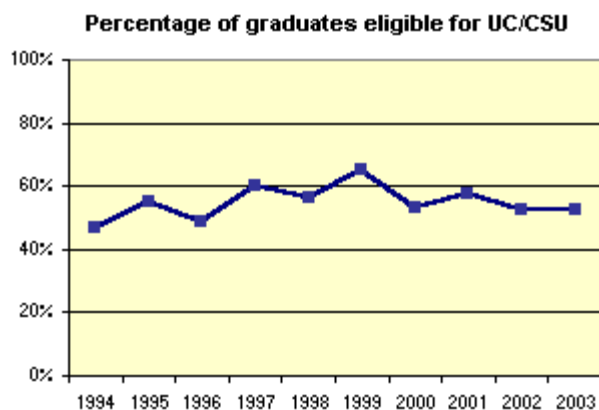
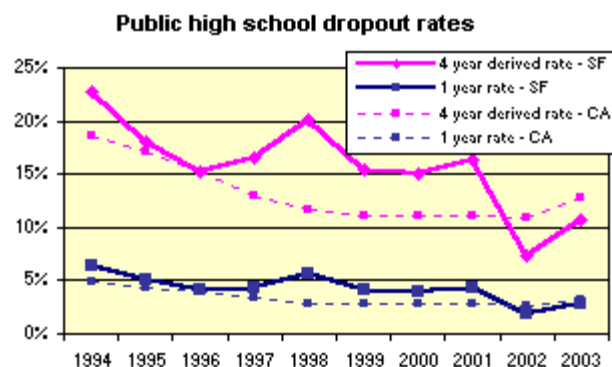
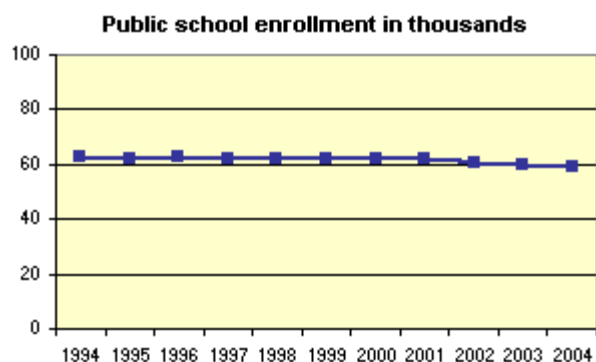


[Back to San Francisco Community Indicators Home Page](#)

Education

San Francisco public schools have lower numbers of students per teacher than the state average. High school dropout rates appear to be declining, and about half of those students who graduate have passed the courses necessary for admissions to California State University or the University of California.

Click on the charts for more information.



last updated 5/24/04

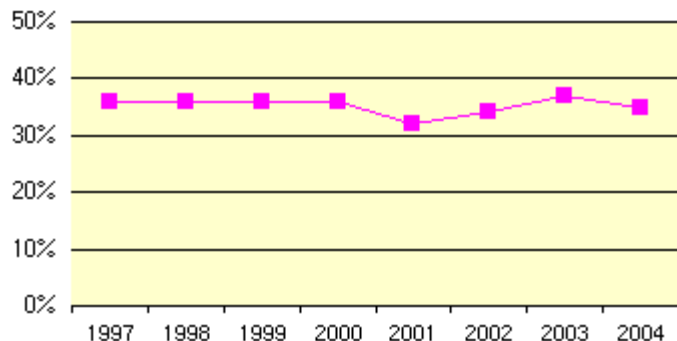
[Back to San Francisco Community Indicators Home Page](#)

Government

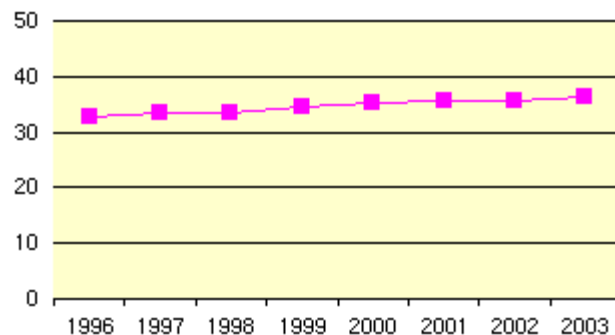
A high proportion of those eligible are registered to vote, although turnout varies considerably. While per capita general bonded debt has increased in recent years, local property tax rates have fallen to about 1.1%. The number of City employees per 1,000 population has risen slightly. San Franciscans' opinions of local government average around "fair."

Click on the charts for more information.

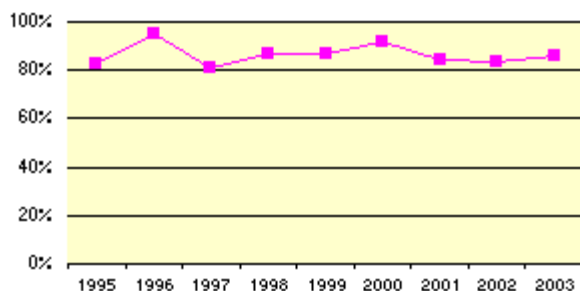
Percentage who rate local government performance Good or Very Good



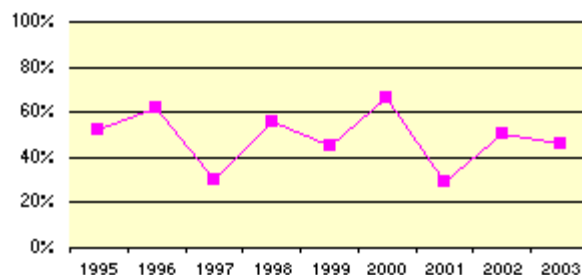
Number of San Francisco City/County full-time equivalent employees per 1000 population



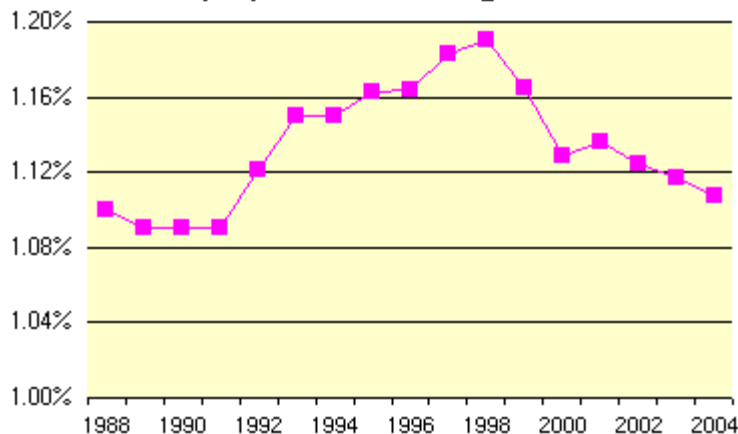
Percentage of eligible adults who are registered to vote (measured in November of each year)



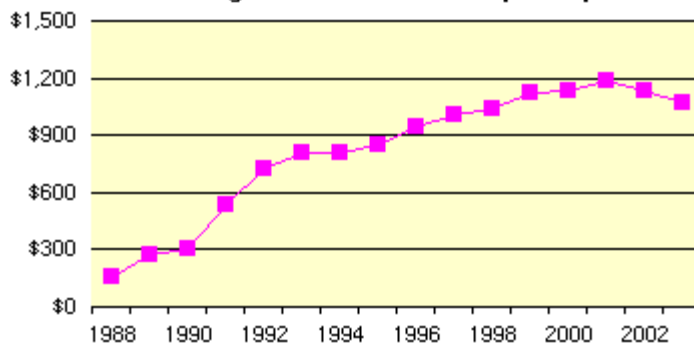
Percentage of registered voters who voted in November election



Property tax rate, including debt service



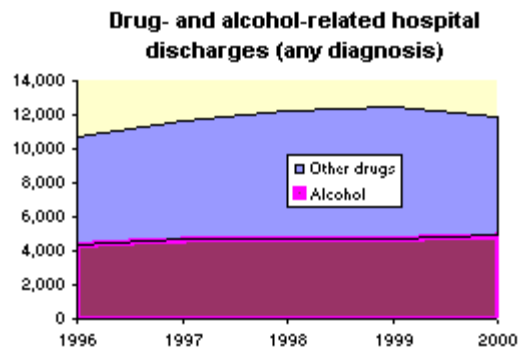
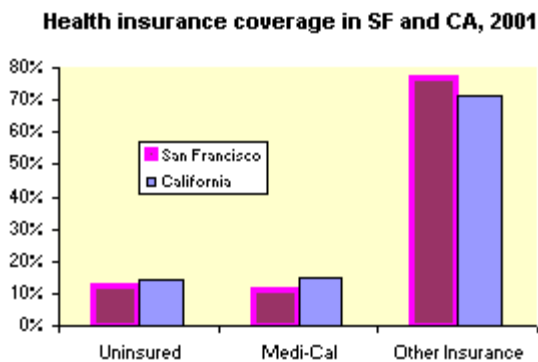
Net general bonded debt per capita



Health

Health indicators include a measure of access to care - the percentage of San Franciscans who do not have insurance. It appears that about 12% of the population lack coverage, while another 10% rely on Medi-Cal. Substance abuse affects the health of San Franciscans, as reflected in an increasing number of hospitalizations related to drug and alcohol use.

Click on the charts for more information.



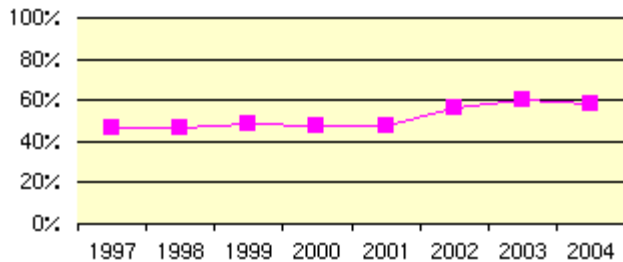
[Back to San Francisco Community Indicators Home Page](#)

Culture and Recreation

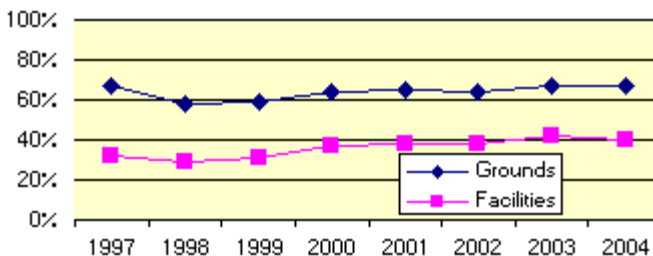
The City's culture and recreation offerings include much-used parks, with generally positive ratings of park grounds but less satisfactory for facilities maintenance. About half of ratings of the City's recreation programs are favorable, while public library users are largely favorable in their assessments.

Click on charts for more information.

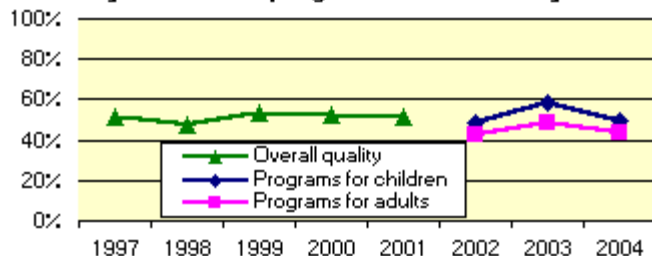
Percentage of San Franciscans who visit city parks at least once a month



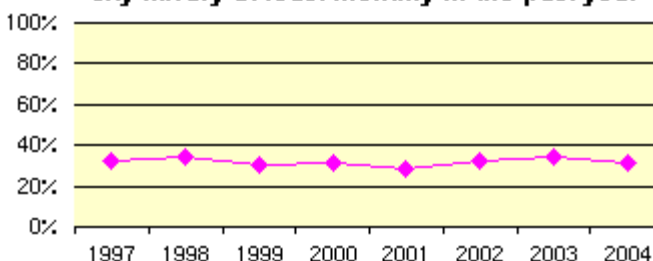
Percentage of San Franciscans who rate park grounds, facilities Good or Very Good



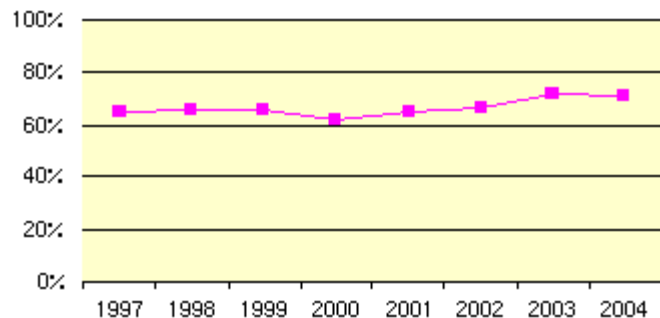
Percentage of San Franciscans who rate City recreation programs Good or Very Good



Percentage of San Franciscans who visited a city library at least monthly in the past year



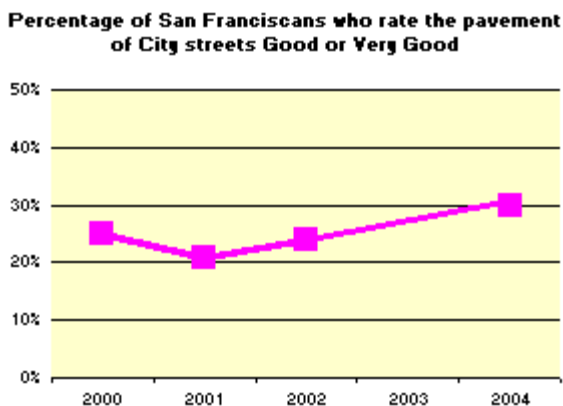
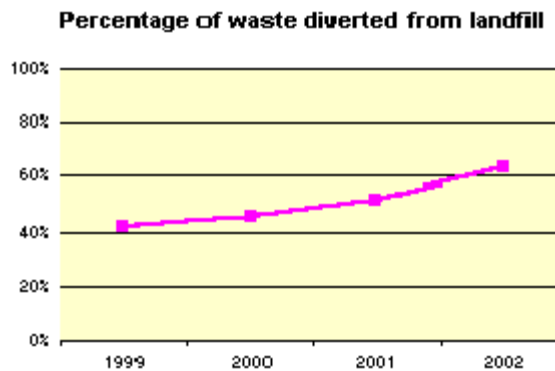
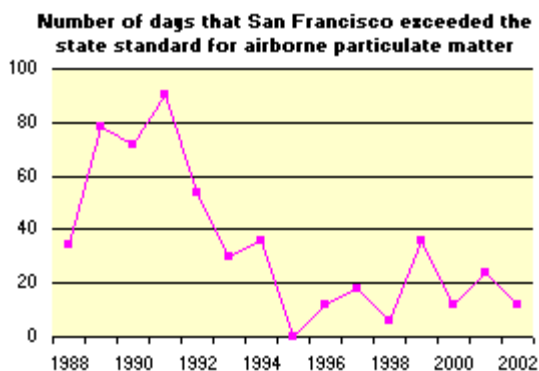
Percentage of San Franciscans who rate library collections Good or Very Good



Physical Environment

San Francisco has mixed indicators related to the physical environment, with increasing diversion of solid waste from landfill through recycling and composting programs, but low ratings of cleanliness of City streets. While San Francisco's air quality is high on some measures, it exceeded the state standards for particulate matter about 12 days in 2002.

Click on the charts for more information.



[Back to San Francisco Community Indicators Home Page](#)